

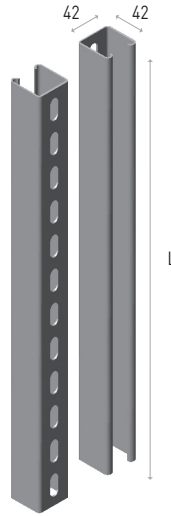
C Profil

C Profile C-образный профиль

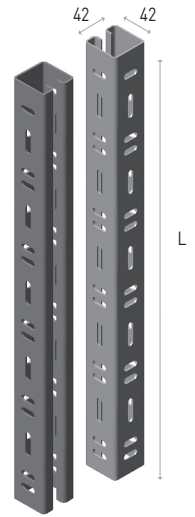
| Sipariş Kodu Order Code Код заказа | Uzunluk Length Длина (mm) | H (mm) | Kalınlık Thickness Толщина (mm) | Ağırlık* Weight вес (Kg/unit) | Ağırlık** Weight вес (Kg/unit) |
|--|------------------------------------|-----------|--|--|---|
| KSC-4221-150 | 2000 | 21 | 1.50 | 2.254 | 2.454 |
| KSC-4242-150 | 2000 | 42 | 1.50 | 3.196 | 3.476 |
| KSC-4221-200 | 2000 | 21 | 2.00 | 3.040 | 3.254 |
| KSC-4242-200 | 2000 | 42 | 2.00 | 4.261 | 4.561 |
| KSCD-4242-150 | 2000 | 42 | 1.50 | 2.931 | 3.211 |
| KSCD-4242-200 | 2000 | 42 | 2.00 | 3.907 | 4.121 |



KSC-4221



KSC-4242

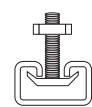
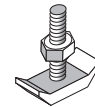


KSCD-4242

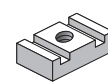
C Profil Bağlantı Elemanları

C Profile Connection Parts
Крепежные элементы C-образный профиль

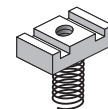
| Sipariş Kodu Order Code Код заказа | Uzunluk Length Длина (mm) | Ağırlık* Weight вес (Kg/unit) |
|--|------------------------------------|--|
| KSM10-YS | Yaylı somun M10/Springy Nut | 0.060 |
| KSM10-S | Yaysız somun M10/Without | 0.052 |
| KSTC-M10 | T civata M10/T bolt | 0.072 |
| KSCS-M10X25 | M10x25 civata/Bolt | 0.021 |



KSTC-M10



KSM10-S



KSM10-YS



KSCS-M10X25

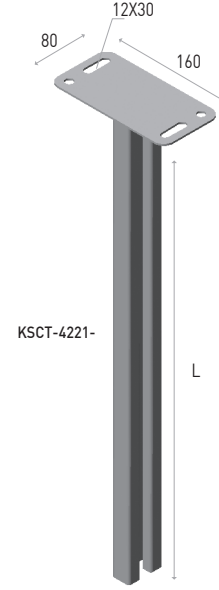
Ağırlık* Pregalvaniz ürünlerin, birim ağırlığıdır. Ağırlık** Sıcak Daldırma Galvaniz kaplamalı ürünlerin, birim ağırlığıdır.
Weight* This weight is unit weight of Pregalvanized products. Weight** This weight is unit weight of Hot-dip galvanization coated products.
Вес* Вес единицы предварительной оцинкованных изделий. Вес** Вес единицы оцинкованных изделий горячим погружением.

C Profil Tavan Desteği

C profile Ceiling Support

Потолочное крепление С-образного профиля

| Sipariş Kodu Order Code Код заказа | Uzunluk Length Длина (mm) | H (mm) | Kalınlık Thickness Толщина (mm) | Ağırlık* Weight вес (Kg/unit) | Ağırlık** Weight вес (Kg/unit) |
|--|------------------------------------|-----------|--|--|---|
| KSCT-4221-400-200 | 400 | 21 | 2.00 | 0.974 | 1.029 |
| KSCT-4221-500-200 | 500 | 21 | 2.00 | 1.126 | 1.192 |
| KSCT-4221-600-200 | 600 | 21 | 2.00 | 1.272 | 1.348 |
| KSCT-4221-1000-200 | 1000 | 21 | 2.00 | 1.834 | 1.953 |
| KSCT-4221-2000-200 | 2000 | 21 | 2.00 | 3.302 | 3.528 |
| KSCT-4242-400-200 | 400 | 42 | 2.00 | 1.225 | 1.297 |
| KSCT-4242-500-200 | 500 | 42 | 2.00 | 1.440 | 1.527 |
| KSCT-4242-600-200 | 600 | 42 | 2.00 | 1.649 | 1.751 |
| KSCT-4242-1000-200 | 1000 | 42 | 2.00 | 2.462 | 2.624 |
| KSCT-4242-2000-200 | 2000 | 42 | 2.00 | 4.558 | 4.870 |

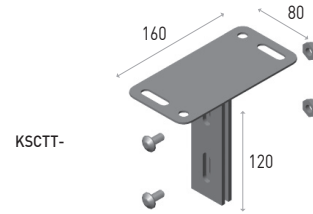


C Profil Tavan Tespit Elemanı

C Profile Ceiling Fixing Part

Потолочный крепежный элемент С-образного профиля

| Sipariş Kodu Order Code Код заказа | Uzunluk Length Длина (mm) | Kalınlık Thickness Толщина (mm) | Ağırlık* Weight вес (Kg/unit) | Ağırlık** Weight вес (Kg/unit) |
|--|------------------------------------|--|--|---|
| KSCTT | 120 | 4.00 | 0.518 | 0.538 |

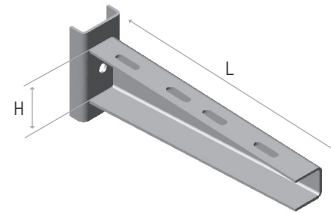


C Konsollar

C Brackets

С-образный консоль

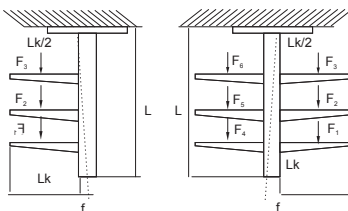
| Sipariş Kodu Order Code Код заказа | Uzunluk Length Длина (mm) | H (mm) | Kalınlık Thickness Толщина (mm) | Ağırlık* Weight вес (Kg/unit) | Ağırlık** Weight вес (Kg/unit) |
|--|------------------------------------|-----------|--|--|---|
| KSCK-070-200 | 80 | 80 | 2.00 | 0.282 | 0.300 |
| KSCK-100-200 | 110 | 80 | 2.00 | 0.330 | 0.351 |
| KSCK-120-200 | 130 | 80 | 2.00 | 0.361 | 0.385 |
| KSCK-160-200 | 170 | 80 | 2.00 | 0.418 | 0.446 |
| KSCK-200-200 | 210 | 80 | 2.00 | 0.475 | 0.508 |
| KSCK-250-200 | 260 | 80 | 2.00 | 0.605 | 0.649 |
| KSCK-300-200 | 310 | 80 | 2.00 | 0.674 | 0.723 |
| KSCK-400-200 | 410 | 80 | 2.00 | 0.835 | 0.897 |
| KSCK-500-200 | 510 | 80 | 2.00 | 1.002 | 1.077 |
| KSCK-600-200 | 610 | 80 | 2.00 | 1.162 | 1.251 |



Statik Değerler

Statics Values

Статические данные



Ağırlık* Pregalvaniz ürünlerin, birim ağırlığıdır

Weight* This weight is unit weight of Pregalvanized products

Bes* Вес единицы предварительной оцинкованных изделий

Ağırlık** Sıcak Daldırma Galvaniz kaplamalı ürünlerin, birim ağırlığıdır

Weight** This weight is unit weight of Hot-dip galvanization coated products

Bes** Вес единицы оцинкованных изделий горячим погружением

KANALSAN

www.kanalsan.com.tr

C Profil Montaj Örnekleri

Installation Examples of C Profile
Примеры монтажа С-образного профиля

